

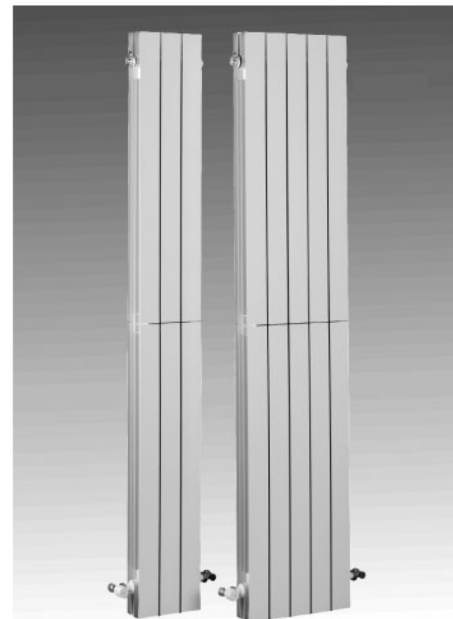
Aluminium radiators

VERTICAL AV 1800

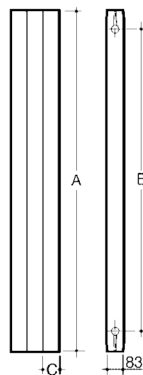
Aluminium radiators for hot water systems up to 6 bar and 110 °C or low-pressure steam up to 0.5 bar.

Main features

- The radiator can be reversed without affecting its appearance.
- Radiators made up of sections which are joined together by means of nipples with left and right-hand thread and sealing gasket.
- Sections manufactured by pressure injecting molten aluminium alloy.
- Radiators assembled and tested to 9 bar.
- Finished off with two coats of paint. Base primer applied by electrophoresis (dipped) with a subsequent coat of white epoxy powder RAL 9010 (both coats oven-dried).
- Accessories made up of: Plugs and bushings, painted and zinc-coated, with left and right-hand thread, gaskets, brackets, automatic venting (PA5 1" (RH or LH) and spray paint for retouching.



Dimensions and Technical Data



Models	Dimensions mm			Water capacity l	Approx. weight kg	Per section in Kcal/h		Exponent "n" of the characteristic curve
	A	B	C			(1)	(2)	
AV 1800	1.800	1.620	80	0,87	4,07	329	234,5	1,34

(1) = Heat output in Kcal/h to UNE 9-015-86 for a $\Delta t = 60$ °C (For your information)

(2) = Heat output in Kcal/h to UNE EN-442 for a $\Delta t = 50$ °C

Δt = (mean radiator T. - room T.) in °C

"n" Exponent of the characteristic curve meets UNE EN-442

Section tappings are delivered with 1" right-hand thread at one side, and left-hand thread at the other. When ordering, make sure to specify the correct thread direction for the bushings and plugs.

Fitting

If you wish to increase the size of a radiator by adding more sections, please note that the corresponding internal nipples and gaskets should be used.

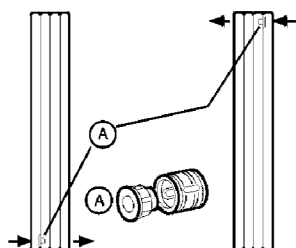
	Code
Nipple 1" AV	194002004 (*)
Gasket 1" $\varnothing 38 \times \varnothing 30,8 \times \varnothing 3,6$ AV	194003004

(*) Set of 50 units.

(See Assembly of Cast-iron Radiators). Plugs and bushings do not require stuffing or any extra sealing as the leak-tightness is ensured by the gasket.

Nipple cap

When flow to and from the radiator in the installation is at the bottom in both cases, or at the top in both cases, the nipple cap is to be fitted between the first and the second section to force the water to travel throughout the entire radiator.



Installation

The following precautions should be taken when installing aluminium radiators:

- **An automatic air vent PA5-1" (RH or LH) should always be fitted to every radiator.**

- The water in the system should be treated so as to maintain the pH between 5 and 8.
- Once installed, do not allow the radiator to become completely isolated from the rest of the system, and do not allow the radiator valve and the lock-shield valve to remain closed simultaneously for any time.

Hydraulic test

We recommend that the radiators are tested after their installation at 1,3 times the working pressure.

Delivery presentation

- Shipped in blocks of 3, 4 and 5 sections, wrapped in a plastic bag and packed in a cardboard box.
- Additional fittings: see "Radiator fittings".

Brackets

For batteries with 3 sections: upper support AV1800S and lower support AV1800 I.
For batteries with 4 sections: upper support AV1800S and lower support AV1800 I.
For batteries with 5 sections: upper support AV1800S and lower support AV1800 I.

