

Gas and oil fired

Low-temperature cast-iron Boilers and Heating Units

HF

Cast-iron boilers and heating units with rated outputs from 77,400 kcal/h to 249,400 kcal/h for central heating and hot water systems up to 6 bar and 100 °C.

Main features

- Cast-iron sectional boiler body with high heat transfer and water flow rate.
- High-efficiency over-pressurized combustion chamber, with double insulation of 50mm thick glass fibre.
- Reversible burner door, which can be easily adapted for right or left hand opening to suit installation requirements.
- It can operate at varying temperature.
- Three-pass flue design.
- Longitudinal turbulators for increased output.
- Front access door which makes cleaning the combustion chamber easier.
- Approved as a low-temperature boiler and according to Efficiency Directive 92/42/EEC (★ ★).

Additional components

- Control Panel CC 170 for a two-stage burner (compulsory supply).
- Boiler wrenches HF1 and HF2 (see table on next page).

Delivery

In 7 packages:

- Control panel.
- Knocked-down boiler body.
- Boiler body assembly fittings.
- Outer casing.



- Turbulators.
- Miscellaneous accessories.
- Set of tie-rods.

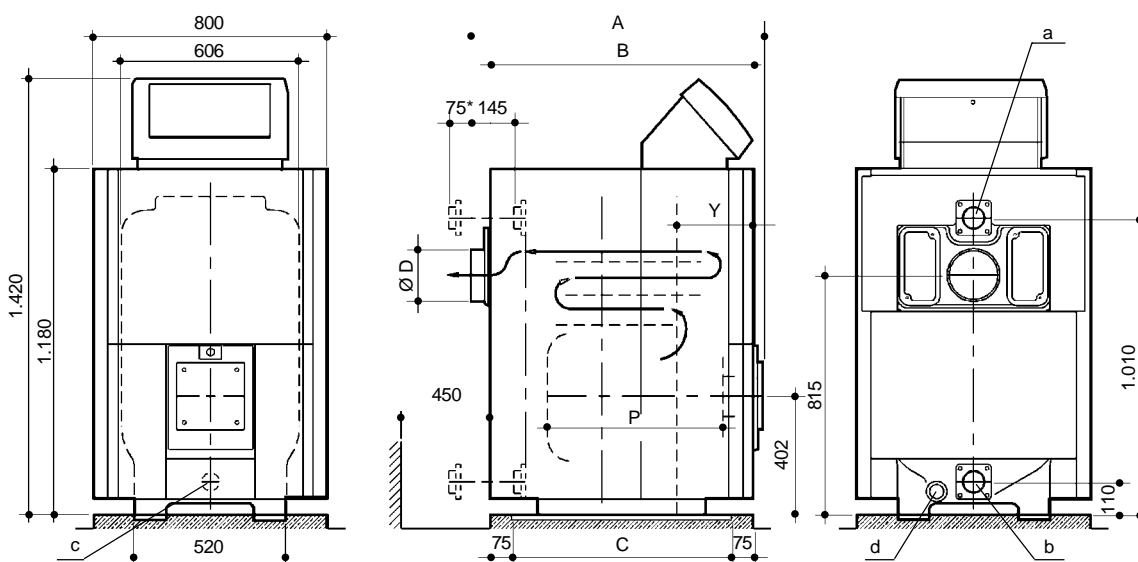
Optional supply

- Two-stage gas or oil fired burners (See "Table for matching burners to boilers")
- Gas train (versions with gas burner).
- Propane gas kit (versions with propane gas burner).

NOTES:

- **The boiler body can be supplied assembled on request. Please check our prices.**

Dimensions and Technical Data



Modelos	Dimensions mm					Flow a	Return b	Cleaning connections c	Drain d	Ø D
	A	B	C	Y	P**					
HF 90	995	900	750	292	595	DN 65	DN 65	2"	1 1/2"	180
HF 130	1.165	1.070	920	292	765	DN 65	DN 65	2"	1 1/2"	180
HF 170	1.335	1.240	1.090	292	935	DN 65	DN 65	2"	1 1/2"	180
HF 210	1.505	1.410	1.260	292	1.105	DN 65	DN 65	2"	1 1/2"	180
HF 250	1.675	1.580	1.430	292	1.275	DN 65	DN 65	2"	1 1/2"	200
HF 290	1.845	1.750	1.600	292	1.445	DN 65	DN 65	2"	1 1/2"	200

* = dimensions with nipples for the water connection.

** = Depth of combustion chamber.

Gas and oil fired

Low-temperature cast-iron Boilers and Heating Units

Model	Working power		Fuel efficiency %	(*) Net efficiency at 30% of rated capacity %	Combustion chamber overpressure mm.c.a.		Water circuit pressure loss $\Delta t=15^{\circ}\text{C}$ mm.c.a.		Approx. weight kg	Water capacity litros
	kcal/h	kW								
HF 90	77.400	90	93,9	90,6	4	2	50	610	112	
HF 130	111.800	130	93,7	90,8	5	5	90	721	136	
HF 170	146.200	170	93,6	91,0	6	8	150	838	160	
HF 210	180.600	210	93,4	91,2	7	12	210	949	184	
HF 250	215.000	250	93,3	91,4	8	18	310	1.061	208	
HF 290	249.400	290	93,2	91,6	9	23	500	1.179	232	

(*) Net efficiency at 30% of rated capacity (with a mean temp. of 50 °C).

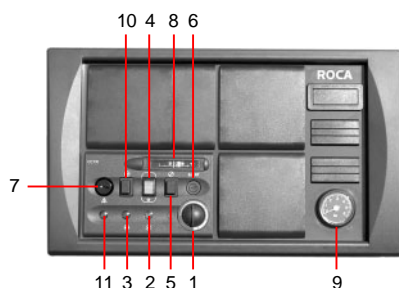
Model	2 stages burners		Flue gas temperature °C
	Oil	Gas	
HF 90	CRONO 10-L2	CRONO 15-G2	174
HF 130	CRONO 15-L2	CRONO 15-G2	177
HF 170	CRONO 20-L2	CRONO 20-G2	180
HF 210	CRONO 25-L2	CRONO 20-G2	182
HF 250	TECNO 34-L	CRONO 30-G2	185
HF 290	TECNO 34-L	CRONO 30-G2	188

Boiler wrenches according to models

Model	Boiler wrench
HF 90	HF1
HF 130	HF1
HF 170	HF1
HF 210	HF1
HF 250	HF1 + 2 HF2
HF 290	HF1 + 2 HF2

Control panel CC 170 for two-stage burners

As an option, the CC 170 control panel may also have control accessories for several zones and for the operation of several boilers in cascade arrangement.



1. Two-stage control thermostat.
2. Power 'on' indicator lamp.
3. Burner lockout indicator lamp.
4. Main on/off switch.
5. Burner 'on' check button.
6. Safety fuse (6.3A).
7. Limit thermostat reset (110 °C).
8. Control thermostat.
9. Pressure gauge.
10. Burner reset.
11. High-limit trip indicator lamp.

Section of boiler

